

# 2007



Kurt S. Wahlen, Chief of Police

A  
N  
N  
U  
A  
L  
  
R  
E  
P  
O  
R  
T



**Kurt S. Wahlen**  
**Chief of Police**

The men and women of the Racine Police Department worked hard during 2007 to keep Racine moving forward. We were there for all the major and minor events, working behind the scenes and, in some cases, well in advance to make sure that all the activities went off without any problems. In 2007, two new events came to Racine that are worth noting, the Hot Rod Car Show and the Hog Rally. Initially, the weather did not cooperate with the Hot Rod Car show, but in the end, the hundreds of participants had a great time in our city. The Hog Rally also went off without any problems.

In 2007, the Command Staff of the Department walked foot beats during the summer months; and for the first time in years, the Department's bicycles were frequently seen upon city Streets, all the way from Rubberville to North Beach. Further, crime trends were acted upon, swiftly, by the Patrol Division. Plans were devised, and patrol personnel were effectively used to address new problems and crime trends. Furthermore, our Community Policing efforts were expanded. Properties were purchased on Villa Street and Hamilton Street in preparation of moving two of our C.O.P. houses in 2008.

The Investigative Division was also called upon to address a number of homicides that, unfortunately, came our way. The Gang Task Force and the Major Crimes Squad played a big part in these investigations – all of which were solved. Further, the Patrol Division and the Investigative Division came together to bring a quick closure to the sexual assault at the Red Apple School and relieve the fears of our community members.

The Special Investigative Unit (SIU) concluded one of its biggest investigations in years. In addition to other SIU accomplishments – the Stinson Investigation resulted in 36 federal indictments, 23 search warrants, recovery of over 5 kilos of cocaine, over \$93,000.00, and numerous weapons – all from local drug dealers.

On another front, the Department launched [www.keepracinesafe.org](http://www.keepracinesafe.org) a website designed as an opportunity to provide information on unsolved homicides and a searchable database for warrant checks. A Tax Intercept Program for delinquent fines was also initiated later in the year. As preparations were made to bring the Records Section to the first floor, the hours of the Department counter were expanded. Hopefully, this will continue in the future to include some weekend hours.

One of the most difficult changes experienced by the Department in 2007 was the acquisition of new operational software. All the police departments within Racine County adopted the Phoenix software program which replaced the old C-Plims. This change was especially difficult for the Records Section and the Communication Section personnel. Our Department was the largest department to become a user of Phoenix software, and our transition was not as seamless as we had hoped; but we have made good progress thanks to the efforts of our personnel.

In closing, please note that I appreciate the contributions made by everyone within the Department to achieve the successes we had in 2007 and am looking forward to the progress we will make in 2008.

Kurt

# **Gary Becker Mayor of Racine**



## **Board of Police and Fire Commissioners**

Marie Black  
Charles Johnson  
Keith Rogers  
Chuck Tyler  
Van Wanggaard

## **Board of Aldermen**

- |                      |                         |
|----------------------|-------------------------|
| 1 Jeff Coe           | 8 Q. A. Shakoor II      |
| 2 Robert L. Anderson | 9 Vacant                |
| 3 Michael Shields    | 10 Thomas Friedel       |
| 4 Jim Kaplan         | 11 Gregory T. Holding   |
| 5 David L. Maack     | 12 Aron Wisenski        |
| 6 Sandy J. Weidner   | 13 James T. Spangenberg |
| 7 Raymond DeHahn     | 14 Ronald D. Hart       |
| 15 Robert Mozol      |                         |

# Command Staff



**Steven Hurley**  
**Assistant Chief**



**Dean Stanton**  
**Deputy Chief**  
**Investigations**



**Arthel Howell**  
**Deputy Chief**  
**Support Services**



**Thomas Christensen**  
**Deputy Chief**  
**Communications**



# Shift/Unit Commanders



Raymond Knapp  
Lieutenant  
Investigations



John Polzin  
Lieutenant  
1st Shift Patrol



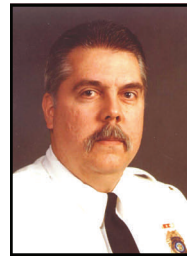
James Dobbs  
Lieutenant  
Planning



Robert Purdy  
Lieutenant  
SIU



Carlos López  
Lieutenant  
2nd Shift Patrol



Jerry Baldukas  
Lieutenant  
Training



Mark Schulz  
Lieutenant  
Investigations



Aldred Days  
Lieutenant  
3rd Shift Patrol



David Smetana  
Lieutenant  
Internal Affairs



# **Retirements, Resignations and Promotions**

## **Retirements**

Richard Eick  
Debra Krueger  
Carl Pavilonis  
George Wanggaard

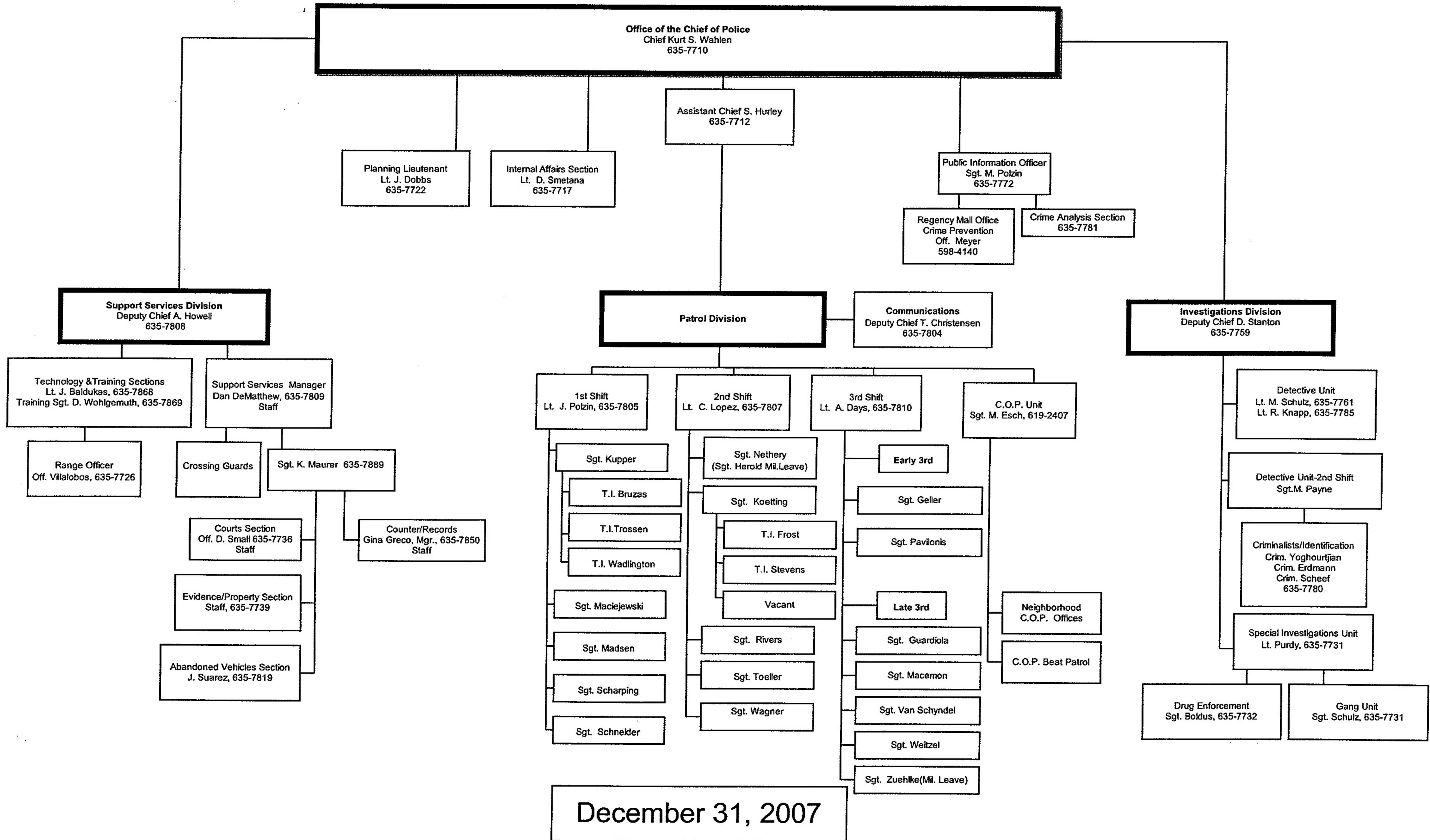
## **Resignations**

Charles Ashbeck  
Kathleen Bass  
Brenda Guillien  
Brian Kretschmann  
Nicholas McDonald  
Frank Williams

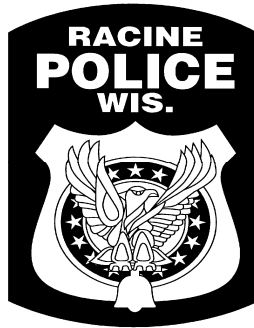
## **Promotions**

Dave Kelly to Investigator  
Daniel Langendorf to Investigator  
Jessie Nethery to Sergeant  
Martin Pavilonis to Sergeant  
Christian VanSchyndel to Sergeant  
John Polzin to Lieutenant  
Steven Hurley to Assistant Chief

# RACINE POLICE DEPARTMENT







## **2007 STATISTICAL SUMMARY**

Crime Statistics Provided by:

John J. Mudrak

Software Coordinator Administrative Assistant  
Racine Police Department

Traffic Statistics Provided by:

Sawyer DeMint

Patrol Division Secretary  
Racine Police Department

Photo Credits:

Mike Erdmann – Racine Police Department

Randy Scheef – Racine Police Department

James Yoghourtjian – Racine Police Department

Cover Design:

James Yoghourtjian – Racine Police Department



## Part One Crimes Reported & Part One Crimes Clearance Rate

### Violent Crimes Reported

	2007	2006	2005	2004	2003	2007 vs. 2006
Homicide	7	7	16	5	3	No Change
Rape	30	15	31	20	21	+ 100%
Robbery	281	245	241	228	205	+ 14.7%
Aggravated Assaults	192	207	102	94	87	- 7.2%
Total Violent Crimes	510	474	390	347	316	+ 7.6%

### Property Crimes Reported

	2007	2006	2005	2004	2003	2007 vs. 2006
Burglary	945	1,113	983	1,016	836	- 15.1%
Theft	2,776	3,116	3,235	3,159	3,055	- 10.9%
Motor Vehicle Theft	267	365	340	383	399	- 26.8%
Arson	27	26	26	22	33	+ 3.8%
Total Property Crimes	4,015	4,620	4,584	4,580	4,323	- 13.1%
Total Part 1-Crimes	4,525	5,094	4,974	4,927	4,639	- 12.6%

### Violent Crime Clearances

	2007 Cases Cleared	2007 Clearance Rate	2006 Cases Cleared	2006 Clearance Rate
Homicide	3	42.9%	10	143.0%
Rape	17	56.7%	9	60%
Robbery	68	24.2%	109	44%
Aggravated Assaults	115	59.9%	165	80%
Total Violent Crimes	203	39.8%	293	61.8%

### Property Crime Clearances

	2007 Cases Cleared	2007 Clearance Rate	2006 Cases Cleared	2006 Clearance Rate
Burglary	86	9.1%	106	10%
Theft	601	21.6%	711	23%
Motor Vehicle Theft	51	19.1%	80	22%
Arson	7	25.9%	6	20%
Total Property Crimes	745	18.6%	903	18%
Total Part 1-Clearances	948	21%	1,196	23%

# Racine Police Department 2000-2007 Community Policing Crime Statistics



SOUTH - EXPANDED IN 2004

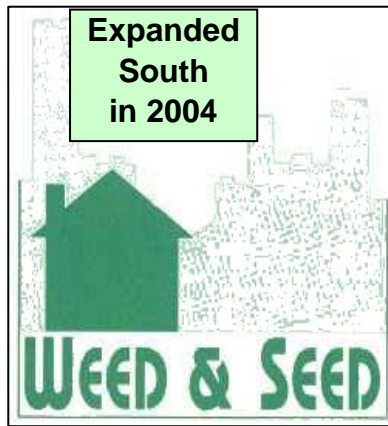


**West Sixth Street COP House**  
**Includes**  
**Squad Area 07 - Grids (O) & (Q)**

**Founded: February 14, 1995**



<u>Violent Crime Totals</u> CFS-TYPE	<u>Highest Reported Year-1991</u>	<u>2007 Vs 2006</u>			<u>2005</u>	<u>2004</u>	<u>2003</u>	<u>2002</u>	<u>2001</u>	<u>2000</u>
		<u>2007</u>	<u>2006</u>	<u>Percent of Change</u>						
Homicide	2	0	0	0.00%	0	1	0	0	0	0
Rape	0	1	0	100.00%	6	2	2	2	0	1
Robbery	34	12	8	50.00%	1	10	8	12	11	15
Aggravated Assault	143	9	13	-30.77%	25	4	1	12	18	22
<b>Violent Crime Totals</b>	<b>179</b>	<b>22</b>	<b>21</b>	<b>4.76%</b>	<b>32</b>	<b>17</b>	<b>11</b>	<b>26</b>	<b>29</b>	<b>38</b>
-										
<u>Property Crime Totals</u> CFS-TYPE	<u>Highest Reported Year-1991</u>	<u>2007 Vs 2006</u>			<u>2005</u>	<u>2004</u>	<u>2003</u>	<u>2002</u>	<u>2001</u>	<u>2000</u>
		<u>2007</u>	<u>2006</u>	<u>Percent of Change</u>						
Burglary	107	35	41	-14.63%	25	43	29	42	51	60
Theft	164	79	109	-27.52%	83	86	92	93	143	103
Auto Theft	87	9	14	-35.71%	19	31	10	17	27	34
Arson	3	3	0	300.00%	1	3	2	3	2	1
<b>Property Crime Totals</b>	<b>361</b>	<b>126</b>	<b>164</b>	<b>-23.17%</b>	<b>128</b>	<b>163</b>	<b>133</b>	<b>155</b>	<b>223</b>	<b>198</b>
<b>Part One Crime Totals</b>	<b>540</b>	<b>148</b>	<b>185</b>	<b>-20.00%</b>	<b>160</b>	<b>180</b>	<b>144</b>	<b>181</b>	<b>252</b>	<b>236</b>
<u>Miscellaneous Calls</u> CFS-TYPE	<u>Highest Reported Year-1991</u>	<u>2007 Vs 2006</u>			<u>2005</u>	<u>2004</u>	<u>2003</u>	<u>2002</u>	<u>2001</u>	<u>2000</u>
		<u>2007</u>	<u>2006</u>	<u>Percent of Change</u>						
Simple Assault	101	50	51	-1.96%	59	59	73	89	92	70
Weapon Violations	167	51	66	-22.73%	57	72	31	39	58	64
Disturbances	1232	639	614	4.07%	645	676	742	720	859	881
Police Service Requested	708	200	211	-5.21%	205	275	263	259	384	412
<b>Total All Calls Reported</b>	<b>6341</b>	<b>3225</b>	<b>3188</b>	<b>1.16%</b>	<b>3342</b>	<b>3587</b>	<b>3568</b>	<b>3757</b>	<b>4310</b>	<b>4548</b>



**Expanded Weed & Seed**  
**Includes**

**Squad Area 05 - Grids (O)(P)(Q)(R)(T)**

**Squad Area 08 - Grids (O)(P)(Q)(R)(T)**

**Founded: In 1998**



<u>Violent Crime Totals</u> CFS-TYPE	<u>Highest Reported</u> Year-1998	<u>2007 Vs 2006</u>			<u>2005</u>	<u>2004</u>	<u>2003</u>	<u>2002</u>	<u>2001</u>	<u>2000</u>
		<u>2007</u>	<u>2006</u>	<u>Percent of Change</u>						
Homicide	4	3	2	50.00%	5	1	1	0	2	2
Rape	8	4	3	33.33%	8	4	2	7	6	4
Robbery	72	82	90	-8.89%	69	78	58	58	90	71
Aggravated Assault	57	59	56	5.36%	35	23	30	41	68	72
<b>Violent Crime Totals</b>	<b>141</b>	<b>148</b>	<b>151</b>	<b>-1.99%</b>	<b>117</b>	<b>106</b>	<b>91</b>	<b>106</b>	<b>166</b>	<b>149</b>

<u>Property Crime Totals</u> CFS-TYPE	<u>Highest Reported</u> Year-1998	<u>2007 Vs 2006</u>			<u>2005</u>	<u>2004</u>	<u>2003</u>	<u>2002</u>	<u>2001</u>	<u>2000</u>
		<u>2007</u>	<u>2006</u>	<u>Percent of Change</u>						
Burglary	303	226	335	-32.54%	276	252	187	233	299	288
Theft	700	463	736	-37.09%	681	732	595	644	764	651
Auto Theft	154	82	110	-25.45%	101	98	103	97	153	138
Arson	17	4	10	-60.00%	5	4	9	5	9	6
<b>Property Crime Totals</b>	<b>1174</b>	<b>775</b>	<b>1191</b>	<b>-34.93%</b>	<b>1063</b>	<b>1086</b>	<b>894</b>	<b>979</b>	<b>1225</b>	<b>1083</b>
<b>Part One Crime Totals</b>	<b>1315</b>	<b>923</b>	<b>1342</b>	<b>-31.22%</b>	<b>1180</b>	<b>1192</b>	<b>985</b>	<b>1085</b>	<b>1391</b>	<b>1232</b>

<u>Miscellaneous Calls</u> CFS-TYPE	<u>Highest Reported</u> Year-1998	<u>2007 Vs 2006</u>			<u>2005</u>	<u>2004</u>	<u>2003</u>	<u>2002</u>	<u>2001</u>	<u>2000</u>
		<u>2007</u>	<u>2006</u>	<u>Percent of Change</u>						
Simple Assaults	386	203	331	-38.67%	309	343	424	401	325	311
Weapon Violations	462	290	384	-24.48%	289	277	228	192	223	300
Disturbances	3436	2743	3885	-29.40%	3709	3653	3493	3507	3799	3495
Police Service Requested	2375	1185	1512	-21.63%	1514	1659	1678	2093	2319	2330
<b>Total All Calls Reported</b>	<b>20558</b>	<b>17256</b>	<b>23161</b>	<b>-25.50%</b>	<b>20748</b>	<b>21522</b>	<b>20915</b>	<b>21651</b>	<b>23018</b>	<b>21416</b>





**Geneva Street & ML King Drive COP House**  
**Includes**  
**Squad Area 02 - Grids (U) & (X)**  
**Squad Area - 03 Grid (Q)**



**Geneva St Founded: December 18, 1997**  
**ML King Dr Founded: May 17, 1994**

<u>Violent Crime Totals</u> CFS-TYPE	<u>Highest Reported Year-1994</u>	<u>2007 Vs 2006</u>			<u>2005</u>	<u>2004</u>	<u>2003</u>	<u>2002</u>	<u>2001</u>	<u>2000</u>
		<u>2007</u>	<u>2006</u>	<u>Percent of Change</u>						
Homicide	1	0	1	-100.00%	0	0	0	0	1	0
Rape	0	1	0	100.00%	0	1	3	1	1	2
Robbery	41	11	8	37.50%	13	7	14	8	20	19
Aggravated Assault	41	8	10	-20.00%	6	6	4	9	19	30
<b>Violent Crime Totals</b>	<b>83</b>	<b>20</b>	<b>19</b>	<b>5.26%</b>	<b>19</b>	<b>14</b>	<b>21</b>	<b>18</b>	<b>41</b>	<b>51</b>

<u>Property Crime Totals</u> CFS-TYPE	<u>Highest Reported Year-1994</u>	<u>2007 Vs 2006</u>			<u>2005</u>	<u>2004</u>	<u>2003</u>	<u>2002</u>	<u>2001</u>	<u>2000</u>
		<u>2007</u>	<u>2006</u>	<u>Percent of Change</u>						
Burglary	52	21	27	-22.22%	43	34	30	29	40	41
Theft	106	42	59	-28.81%	84	62	71	62	46	64
Auto Theft	37	6	8	-25.00%	13	20	28	19	14	19
Arson	11	1	0	100.00%	0	1	1	3	1	1
<b>Property Crime Totals</b>	<b>206</b>	<b>70</b>	<b>94</b>	<b>-25.53%</b>	<b>140</b>	<b>117</b>	<b>130</b>	<b>113</b>	<b>101</b>	<b>125</b>
<b>Part One Crime Totals</b>	<b>289</b>	<b>90</b>	<b>113</b>	<b>-20.35%</b>	<b>159</b>	<b>131</b>	<b>151</b>	<b>131</b>	<b>142</b>	<b>176</b>

<u>Miscellaneous Calls</u> CFS-TYPE	<u>Highest Reported Year-1994</u>	<u>2007 Vs 2006</u>			<u>2005</u>	<u>2004</u>	<u>2003</u>	<u>2002</u>	<u>2001</u>	<u>2000</u>
		<u>2007</u>	<u>2006</u>	<u>Percent of Change</u>						
Simple Assaults	127	45	48	-6.25%	51	76	58	75	87	38
Weapon Violations	242	50	55	-9.09%	43	34	38	51	54	45
Disturbances	945	426	542	-21.40%	516	528	511	634	614	588
Police Service Requested	459	183	198	-7.58%	194	196	167	241	271	322
<b>Total All Calls Reported</b>	<b>5046</b>	<b>2988</b>	<b>3189</b>	<b>-6.30%</b>	<b>2921</b>	<b>3036</b>	<b>3382</b>	<b>3909</b>	<b>4067</b>	<b>3786</b>



**Mead Street COP House**  
**Includes**  
**Squad Area 05 - All Grids**

**Founded: July 17, 1996**



<b><u>Violent Crime Totals</u></b> <b><u>CFS-TYPE</u></b>	<b><u>Highest Reported</u></b> <b><u>Year-1995</u></b>	<b><u>2007 Vs 2006</u></b>			<b><u>2005</u></b>	<b><u>2004</u></b>	<b><u>2003</u></b>	<b><u>2002</u></b>	<b><u>2001</u></b>	<b><u>2000</u></b>
		<b><u>2007</u></b>	<b><u>2006</u></b>	<b><u>Percent of Change</u></b>						
Homicide	0	0	1	-100.00%	1	0	0	0	0	0
Rape	1	0	1	-100.00%	2	0	0	0	1	0
Robbery	21	15	7	114.29%	3	6	4	5	7	5
Aggravated Assault	25	0	5	-500.00%	1	3	8	4	6	6
<b>Violent Crime Totals</b>	<b>47</b>	<b>15</b>	<b>14</b>	<b>7.14%</b>	<b>7</b>	<b>9</b>	<b>12</b>	<b>9</b>	<b>14</b>	<b>11</b>

<b><u>Property Crime Totals</u></b> <b><u>CFS-TYPE</u></b>	<b><u>Highest Reported</u></b> <b><u>Year-1995</u></b>	<b><u>2007 Vs 2006</u></b>			<b><u>2005</u></b>	<b><u>2004</u></b>	<b><u>2003</u></b>	<b><u>2002</u></b>	<b><u>2001</u></b>	<b><u>2000</u></b>
		<b><u>2007</u></b>	<b><u>2006</u></b>	<b><u>Percent of Change</u></b>						
Burglary	29	33	26	26.92%	19	24	16	18	26	26
Theft	69	26	44	-40.91%	42	35	29	37	53	50
Auto Theft	24	4	6	-33.33%	9	12	11	11	15	16
Arson	3	0	1	-100.00%	0	0	1	2	2	2
<b>Property Crime Totals</b>	<b>125</b>	<b>63</b>	<b>77</b>	<b>-18.18%</b>	<b>70</b>	<b>71</b>	<b>57</b>	<b>68</b>	<b>96</b>	<b>94</b>
<b>Part One Crime Totals</b>	<b>172</b>	<b>78</b>	<b>91</b>	<b>-14.29%</b>	<b>77</b>	<b>80</b>	<b>69</b>	<b>78</b>	<b>110</b>	<b>105</b>

<b><u>Miscellaneous Calls</u></b> <b><u>CFS-TYPE</u></b>	<b><u>Highest Reported</u></b> <b><u>Year-1995</u></b>	<b><u>2007 Vs 2006</u></b>			<b><u>2005</u></b>	<b><u>2004</u></b>	<b><u>2003</u></b>	<b><u>2002</u></b>	<b><u>2001</u></b>	<b><u>2000</u></b>
		<b><u>2007</u></b>	<b><u>2006</u></b>	<b><u>Percent of Change</u></b>						
Simple Assaults	72	17	26	-34.62%	28	35	52	52	43	37
Weapon Violations	186	45	53	-15.09%	29	30	51	24	38	64
Disturbances	492	262	313	-16.29%	327	349	338	379	450	364
Police Service Requested	196	60	97	-38.14%	103	119	115	149	172	200
<b>Total All Calls Reported</b>	<b>2817</b>	<b>1356</b>	<b>1773</b>	<b>-23.52%</b>	<b>1738</b>	<b>1926</b>	<b>2058</b>	<b>2038</b>	<b>2372</b>	<b>2146</b>



**Davis Place & Villa Street COP House**  
**Includes**  
**Squad Area 04 - Grids (P) & (Q)**  
**(S) & (T)**

**Davis PI Founded: December 1, 1999**  
**Villa St Founded: June 13, 1994**



<u>Violent Crime Totals</u> CFS-TYPE	<u>Highest Reported</u> Year-1995	<u>2007 Vs 2006</u>			<u>2005</u>	<u>2004</u>	<u>2003</u>	<u>2002</u>	<u>2001</u>	<u>2000</u>
		<u>2007</u>	<u>2006</u>	<u>Percent of Change</u>						
Homicide	2	2	1	100.00%	4	1	1	0	1	1
Rape	0	2	2	0.00%	1	0	0	6	4	0
Robbery	44	32	16	100.00%	16	22	15	18	21	22
Aggravated Assault	46	16	11	45.45%	7	7	8	18	31	36
<b>Violent Crime Totals</b>	<b>92</b>	<b>52</b>	<b>30</b>	<b>73.33%</b>	<b>28</b>	<b>30</b>	<b>24</b>	<b>42</b>	<b>57</b>	<b>59</b>

<u>Property Crime Totals</u> CFS-TYPE	<u>Highest Reported</u> Year-1995	<u>2007 Vs 2006</u>			<u>2005</u>	<u>2004</u>	<u>2003</u>	<u>2002</u>	<u>2001</u>	<u>2000</u>
		<u>2007</u>	<u>2006</u>	<u>Percent of Change</u>						
Burglary	92	61	80	-23.75%	61	67	80	68	80	86
Theft	233	172	240	-28.33%	227	220	198	236	235	201
Auto Theft	47	30	32	-6.25%	37	28	33	13	41	36
Arson	5	1	3	-66.67%	2	3	3	1	0	1
<b>Property Crime Totals</b>	<b>377</b>	<b>264</b>	<b>355</b>	<b>-25.63%</b>	<b>327</b>	<b>318</b>	<b>314</b>	<b>318</b>	<b>356</b>	<b>324</b>
<b>Part One Crime Totals</b>	<b>469</b>	<b>316</b>	<b>385</b>	<b>-17.92%</b>	<b>355</b>	<b>348</b>	<b>338</b>	<b>360</b>	<b>413</b>	<b>383</b>

<u>Miscellaneous Calls</u> CFS-TYPE	<u>Highest Reported</u> Year-1995	<u>2007 Vs 2006</u>			<u>2005</u>	<u>2004</u>	<u>2003</u>	<u>2002</u>	<u>2001</u>	<u>2000</u>
		<u>2007</u>	<u>2006</u>	<u>Percent of Change</u>						
Simple Assaults	140	80	95	-15.79%	109	119	135	114	140	73
Weapon Violations	189	52	110	-52.73%	100	84	57	50	76	76
Disturbances	1372	1405	1413	-0.57%	1510	1515	1480	1274	1399	1304
Police Service Requested	1157	575	657	-12.48%	766	793	906	1126	1184	1126
<b>Total All Calls Reported</b>	<b>8026</b>	<b>7745</b>	<b>7905</b>	<b>-2.02%</b>	<b>8127</b>	<b>8451</b>	<b>8436</b>	<b>8514</b>	<b>8313</b>	<b>7591</b>



**Regency Mall COP House**  
**Includes**  
**Geo Address Range**  
**5200-6099 Durand Avenue**



**Founded: March 1, 1996**

<u>Violent Crime Totals</u> <u>CFS-TYPE</u>	<u>Highest Reported</u> <u>Year-1995</u>	<u>2007 Vs 2006</u>			<u>2005</u>	<u>2004</u>	<u>2003</u>	<u>2002</u>	<u>2001</u>	<u>2000</u>
		<u>2007</u>	<u>2006</u>	<u>Percent of Change</u>						
Homicide	0	0	0	0.00%	0	0	0	0	0	0
Rape	0	0	0	0.00%	0	0	0	0	0	0
Robbery	6	2	4	-50.00%	4	4	2	3	7	4
Aggravated Assault	0	2	2	0.00%	0	0	0	0	0	0
<b>Violent Crime Totals</b>	<b>6</b>	<b>4</b>	<b>6</b>	<b>-33.33%</b>	<b>4</b>	<b>4</b>	<b>2</b>	<b>3</b>	<b>7</b>	<b>4</b>
<u>Property Crime Totals</u> <u>CFS-TYPE</u>	<u>Highest Reported</u> <u>Year-1995</u>	<u>2007 Vs 2006</u>			<u>2005</u>	<u>2004</u>	<u>2003</u>	<u>2002</u>	<u>2001</u>	<u>2000</u>
		<u>2007</u>	<u>2006</u>	<u>Percent of Change</u>						
Burglary	1	2	1	100.00%	1	3	2	2	2	1
Theft	237	338	176	92.05%	169	119	138	133	216	220
Auto Theft	10	5	3	66.67%	2	0	1	2	10	9
Arson	0	0	0	0.00%	0	0	0	0	0	0
<b>Property Crime Totals</b>	<b>248</b>	<b>345</b>	<b>180</b>	<b>91.67%</b>	<b>172</b>	<b>122</b>	<b>141</b>	<b>137</b>	<b>228</b>	<b>230</b>
<b>Part One Crime Totals</b>	<b>254</b>	<b>349</b>	<b>186</b>	<b>87.63%</b>	<b>176</b>	<b>126</b>	<b>143</b>	<b>140</b>	<b>235</b>	<b>234</b>
<u>Miscellaneous Calls</u> <u>CFS-TYPE</u>	<u>Highest Reported</u> <u>Year-1995</u>	<u>2007 Vs 2006</u>			<u>2005</u>	<u>2004</u>	<u>2003</u>	<u>2002</u>	<u>2001</u>	<u>2000</u>
		<u>2007</u>	<u>2006</u>	<u>Percent of Change</u>						
Simple Assaults	6	8	11	-27.27%	9	10	8	10	13	8
Weapon Violations	7	1	3	-66.67%	4	4	3	1	3	2
Disturbances	59	101	78	29.49%	80	49	69	82	86	79
Police Service Requested	40	65	49	32.65%	64	58	114	59	96	115
<b>Total All Calls Reported</b>	<b>741</b>	<b>1247</b>	<b>727</b>	<b>71.53%</b>	<b>704</b>	<b>683</b>	<b>777</b>	<b>788</b>	<b>1316</b>	<b>1185</b>

City Of Racine Municipal Violations (UMCC) for the Year 2007

CITY ORDINANCE	ORD. NUMBER	JAN	FEB	MAR	APR	MAY	JUNE	JULY	AUG	SEPT	OCT	NOV	DEC	TOTAL
All Alcohol Beverage Violations	[6 -2 - 6-58]	30	5	36	38	35	79	33	43	67	30	15	9	420
All Other Liquor Violations	[6-82- 6-167]	0	1	0	1	0	0	2	0	0	0	7	1	12
Entertainment Violations	[6-194 -a-c]	0	0	0	0	0	0	0	0	0	0	0	0	0
Animal License Violations	[10-36 - 10-40]	5	2	3	5	14	11	14	9	9	4	5	1	82
Animal Care/Control Violations	[10-61 - 10-72]	2	5	6	8	8	13	14	7	5	25	7	1	101
Animal Rabies/Vaccination Violations	[10-96-10-102]	2	1	1	4	3	0	0	6	4	0	0	0	21
Building Code Violations	[18-27 - 18-813]	0	0	0	0	0	0	0	0	0	0	0	0	0
Business/Occup/Profess. Licenses	[22-26 - 22-1192]	0	0	1	0	0	1	0	0	0	0	0	0	2
Cemetery Violations	[30-001 - 30-124]	0	0	0	0	0	0	0	0	0	0	0	0	0
Audible Alarms Violations	[38-036 - 38- 039]	0	0	0	0	0	0	0	0	0	0	0	0	0
Environment Viol - Nuisances Violations	[42-01 - 42-36]	1	0	0	0	0	1	0	0	0	0	0	0	2
Environment Viol - Weed Control Violations	[42-56 - 42-62]	0	0	0	0	0	0	0	0	0	0	0	0	0
Environment Viol - All Other Violations	[42-86 - 42-88]	0	0	0	0	0	0	0	0	0	0	0	0	0
Unreasonable Amplification	[42-128 - 42-144]	7	0	3	11	15	17	2	6	12	1	0	0	74
Fire Prevention /Protection Violations	[50-1 - 50-269]	5	4	0	1	0	1	4	6	1	1	1	2	26
Abandoned Refrigerator/Icebox Violations	[66-001]	0	0	0	0	0	0	0	0	0	0	2	0	2
Disorderly Conduct	[66-31 - 66-34]	82	78	137	73	116	63	78	43	93	70	66	29	928
Harassing Phone Calls	[66-033]	0	0	2	0	0	0	0	0	0	1	0	0	3
Weapon Violations	[66-57 - 66-60]	2	1	5	2	0	4	2	3	1	0	0	0	20
Obstruction of Public Ways	[66-107 - 66-135]	25	9	27	14	31	22	15	27	34	1	0	0	205
Trespassing Violations	[66-136 - 66-137]	16	16	18	12	30	20	10	16	30	40	17	10	235
Resisting Arrest	[66-162]	34	17	21	11	34	21	17	13	32	26	17	14	257
Failure to Aid Law Enforcement	[66-161 - 66-164]	0	2	0	0	0	0	0	0	0	0	0	0	2
Obstructing	[66-165]	0	0	0	0	1	1	0	2	0	0	1	0	5
Vandalism Violations	[66-186 - 66-196]	1	0	2	2	5	2	3	2	5	2	1	0	25
Theft	[66-211 - 66-228]	12	13	14	15	20	13	7	11	11	20	21	13	170
Possession Marijuana	[66-261]	0	0	2	2	1	5	0	2	5	0	0	0	17
Possession Drug Paraphernalia	[66-271]	0	0	0	0	0	0	0	0	0	0	0	0	0
Gambling Violations	[66-296 - 66-299]	0	0	0	0	2	0	0	0	0	1	0	0	3
Prostitution Violations	[66-321 - 66-322]	0	0	0	0	0	0	0	2	1	0	0	0	3
Disorderly House	[66-347]	1	0	1	1	14	0	0	0	71	2	1	0	91
Littering	[66-371 - 66-372]	1	0	5	4	4	8	4	3	4	2	1	0	36
Curfew - Minor	[66-396]	35	18	25	40	48	66	54	82	51	19	12	11	461
Curfew - Parent	[66-397]	6	1	0	3	0	4	1	1	3	1	1	0	21
Picketing Violations	[66-422 - 66-423]	0	0	0	0	0	0	0	0	0	0	0	0	0
Fraud Violations	[66-456 - 66-490]	0	0	0	0	0	0	0	0	0	0	0	1	1
Fire Work Violations	[66-516]	0	1	3	1	0	11	15	2	0	0	0	0	33
Skate Board Violations	[66-542]	0	0	0	0	0	1	0	0	0	0	0	0	1
Worthless Checks	[66-566]	0	0	0	0	0	0	0	0	0	0	0	0	0
911- Non-Emergency Use	[66-592]	2	2	1	5	0	5	3	4	2	1	3	0	28
Tobacco Products Possession By Minor	[66-647]	21	23	29	30	32	18	18	12	43	36	22	7	291
Sale of Tobacco Products to Minor	[66-667]	0	0	0	0	0	7	3	0	0	1	2	14	27
Truancy	[66-802,803-806]	156	176	204	150	212	65	0	0	216	208	133	64	1584
Park Violations	[70-76 - 70-132]	0	0	6	4	3	60	29	14	8	0	1	0	125
Snow on Sidewalk	[82-109]	0	0	0	0	0	0	0	0	0	0	0	0	0
Solid Waste Violations	[78-2 - 78-117]	3	2	0	0	1	0	0	3	0	0	0	0	9
ALL OTHER VIOLATIONS		1	1	3	4	1	10	7	6	9	37	41	13	133
2007		450	378	555	441	630	529	335	325	717	529	377	190	5,456
2006		494	509	755	649	698	415	375	362	612	598	423	387	6,277
Percent of Change are not available		-8.9%	-25.7%	-26.5%	-32.0%	-9.7%	27.5%	-10.7%	-10.2%	17.2%	-11.5%	-10.9%	-50.9%	-13.1%

NOTE: THE YELLOW HIGHLIGHTED ARE CITY ORDINANCES THAT ARE USUALLY ISSUED BY OTHER CITY DEPARTMENTS





## UNIFORM TRAFFIC CITATIONS (UTC) YEAR 2007

TYPE OF VIOLATION	1st Shift	2nd Shift	Early 3rd Shift	3rd Shift	2007 Totals	2006 Totals	Percent of Change
Registration of Vehicle Violations	379	1506	295	387	2567	1837	39.7%
Operator's License Violations	567	1918	498	567	3550	2897	22.5%
Improper Lane Usage	203	277	49	40	569	605	-6.0%
Right Of Way (FYRW)	196	247	33	17	493	479	2.9%
Right Of Way Pedestrian (FYRW)	5	29	0	4	38	49	-22.4%
Turning & Stopping Violations	140	221	82	84	527	484	8.9%
Required Stops Violations	76	229	45	70	420	466	-9.9%
Restrictions on Stopping & Parking	6	52	26	24	108	78	38.5%
Speeding Violations	413	419	209	175	1216	1128	7.8%
Reckless Driving	14	44	21	19	98	58	69.0%
O.V.W.I Violations	28	87	55	50	220	182	20.9%
Accident & Accident Report Violations	93	97	28	36	254	190	33.7%
ALL OTHER VIOLATIONS	156	281	58	88	583	440	32.5%
Radio Amplification Violations	14	260	26	23	323	145	122.8%
Seatbelt Violations	149	694	161	226	1230	1149	7.0%
Equipment Violations	211	516	374	380	1481	1186	24.9%
2007 Totals	2,650	6,877	1,960	2190	13,677	11,373	20.3%
2006 Totals	2,559	5,213	2,157	1444	11,373		
PERCENT OF CHANGE	3.6%	31.9%	-9.1%	51.7%			



## Officer Issued Parking Enforcement

TYPE OF VIOLATIONS	2007	2006	% Change
Meter Violations	20	21	-4.76%
Overtime Parking	54	35	54.29%
No Parking Area	769	652	17.94%
Loading Zone Violations	9	9	0.00%
Street Storage	18,880	21,325	-11.47%
Parking Prohibited	943	735	28.30%
Restricted Parking	217	237	-8.44%
Improper Parking	840	934	-10.06%
Abandoned Vehicles	1,106	1,018	8.64%
Winter/Snow Violations	6	18	-66.67%
School Zone Violations	802	410	95.61%
Tow Away Zone	237	288	-17.71%
Misc. Violations	1,158	1,526	-24.12%
<b>TOTALS</b>	<b>25,041</b>	<b>27,208</b>	<b>-7.96%</b>

SHIFT BREAKDOWN	2007	2006	% Change
1st Shift Totals	3,509	4,394	-20.14%
2nd Shift Totals	1,773	2,050	-13.51%
3rd Shift Totals	9,110	14,124	-35.50%
Early 3rd Shift ###	10,649	6,640	60.38%
<b>TOTALS</b>	<b>25,041</b>	<b>27,208</b>	<b>-7.96%</b>

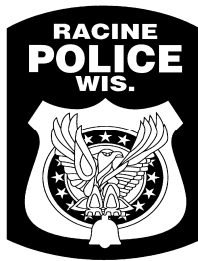
### -Note The increase in early 3rd shift ticket total is due to the changes made going from 4th shift to early 3rd shift hours



## Motor Vehicle Crashes

	2007	2006	2007 vs. 2006
Fatal Crashes	3	4	-25%
Injury Crashes	712	735	-3%
Property Damage Crashes Under \$1000	952	892	7%
Property Damage Crashes Over \$1000	1517	1,416	7%
Crashes Classified as Hit & Run*	930*	907*	3%
<b>Total Traffic Crashes</b>	<b>3184</b>	<b>3,047</b>	<b>5%</b>

\* Hit and run crashes are listed separately; however, they are already included in the four above listed categories.



**Racine Police Department**

730 Center Street  
Racine, Wisconsin 53403  
262-635-7700

All questions or comments regarding this report should be directed to  
Sergeant Bernard Kupper, Public Information Officer (262) 635-7772.